



[HOME](#) | [ABOUT US](#) | [NEWS](#) | [CONTACT US](#)

Search By Part number

Check stock by region

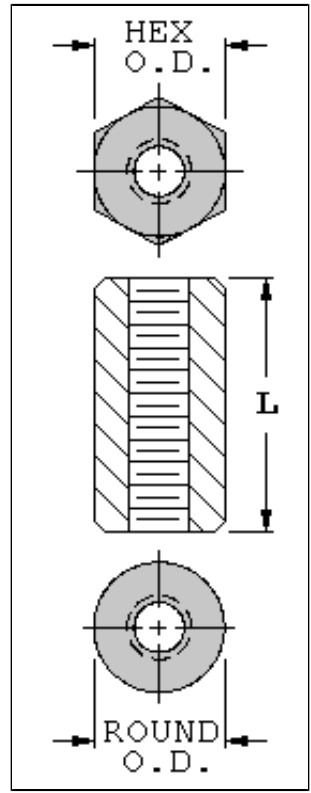
GO

GO

[PRODUCTS](#) || [CUSTOM CAPABILITIES](#) || [PART BUILDER](#) || [GLOBAL DISTRIBUTION](#) || [ORDER ONLINE](#)

Hex & Round Standoffs

4-40 Threads - .187 [4,75] O.D. - Brass • Aluminum • Stainless Steel



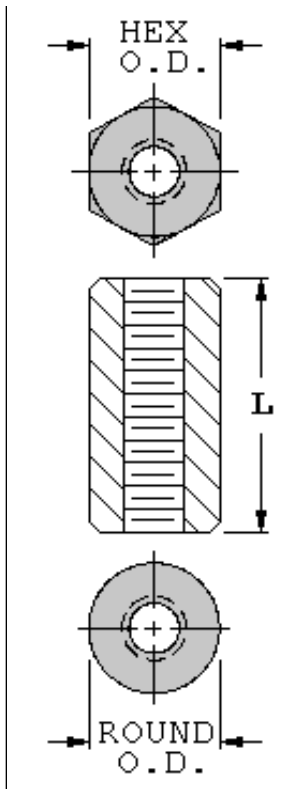
4-40 Threaded Standoffs - .187 [4,75] O.D.						
Length "L" Inch [mm]	O.D. Inch [mm]	Aluminum Clear Iridite		Brass Zinc Plate		Stainless Steel
		Cat. No.		Cat. No.		Cat. No.
		Hex	Round	Hex	Round	Hex
.250 [6,35]	.187 [4,75]	1891	2025	1450	1547	Click Here
.375 [9,53]	.187 [4,75]	1892	2026	1803	1864	Click Here
.500 [12,70]	.187 [4,75]	1893	2027	1656	1657	Click Here
.625 [15,87]	.187 [4,75]	1894	2028	1804	1865	Click Here
.750 [19,05]	.187 [4,75]	1895	2029	1656A	1657A	Click Here
.875 [22,23]	.187 [4,75]	1896	2030	1805	1866	Click Here
1.000 [25,40]	.187 [4,75]	1897	2031	1656B	1657B	Click Here

Stainless Steel Standoffs, .500 [12,70] and longer, are tapped .250 [6,35] each end.
Standoffs sizes not shown are available on special order.

[Click to Request Samples](#)

VIEW PRODUCT OVERVIEW

4-40 Threads - .250 [6,35] O.D. - Brass • Aluminum • Stainless Steel



4-40 Threaded Standoffs - .250 [6,35] O.D.						
Length "L" Inch [mm]	O.D. Inch [mm]	Aluminum Clear Iridite		Brass Zinc Plate		Stainless Steel
		Cat. No.		Cat. No.		Cat. No.
		Hex	Round	Hex	Round	Hex
.250 [6,35]	.250 [6,35]	2201	3478	1450A	1547A	1921
.375 [9,53]	.250 [6,35]	2202	3479	1450B	1547B	1921A
.500 [12,70]	.250 [6,35]	2203	3480	1450C	1547C	1921B
.625 [15,87]	.250 [6,35]	1808	1839	1829	1867	<u>Special Order</u>
.750 [19,05]	.250 [6,35]	2204	3481	1450D	1547D	1921C
.875 [22,23]	.250 [6,35]	1809	1846	1830	1876	<u>Special Order</u>
1.000 [25,40]	.250 [6,35]	2205	3482	1450E	1547E	1921D
1.500 [38,10]	.250 [6,35]	2206	3483	1831	1877	1921E
2.000 [50,80]	.250 [6,35]	2207	3484	1832	1878	1921F

Standoffs over 1.000 [25,40] long are tapped .375 [9.63] each end.
 Stainless Steel Standoffs , .500 [12,70] and longer, are tapped .250 [6,35] each end.
 Standoff sizes not shown are available on special order.

[Click to Request Samples](#)

